

Kadaltilla

Park Lands Authority



BOARD MEETING MINUTES

Thursday 26 May 2022
Colonel Light Room, Adelaide Town Hall

Kadaltilla / Park Lands Authority

Board Meeting Minutes, Thursday, 26 May 2022, at 5.34 pm
Colonel Light Room, Adelaide Town Hall, King William Street, Adelaide

Present:

Presiding Member The Right Honourable the Lord Mayor, Sandy Verschoor

Board Members
Allison Bretones
Rob Brookman AM
Councillor Helen Donovan
Stephanie Johnston
Craig Wilkins
Ben Willsmore

Welcome and Opening

1.1 Acknowledgement of Country

With the welcome and opening of the Board Meeting, the Presiding Member, Lord Mayor Sandy Verschoor stated:

‘Kadaltilla / Park Lands Authority acknowledges that we are meeting on traditional Country of the Kaurna people of the Adelaide Plains and pays respect to Elders past and present. We recognise and respect their cultural heritage, beliefs and relationship with the land. We acknowledge that they are of continuing importance to the Kaurna people living today.

And we also extend that respect to other Aboriginal Language Groups and other First Nations who are present today.’

The Presiding Member, Lord Mayor Sandy Verschoor also reiterated the commitment of the City of Adelaide to National Sorry day and acknowledgment of all it represents.

1.2 Apologies

Deputy Presiding Member – Kirsteen Mackay
Board Member – Ashley Halliday

1.3 Confirmation of Minutes

April Minutes to be confirmed in June

2 Disclosure of Conflict of Interest

Board Member, Ben Willsmore
Manager City Design
City of Unley

Item 4.1 - Adelaide Park Lands Management Strategy Review – Consultation

Representation to be heard from the City of Unley

Advised a perceived conflict arises as an employee of the City of Unley.

Presiding Member Report

3.1 Presiding Member Verbal Report

Adelaide Park Lands Management
Strategy Review

- Start of engagement process
- Initial consultations commenced with adjoining Councils, ODASA, Green Adelaide, the Minister and State Planning Commission
- Thanked and expressed appreciation to those Councils and Key Partners who will be presenting to Kadaltilla

- Kadaltilla Membership
 - Confirmed and welcomed the appointment of Councillor Helen Donovan following gazettal on 5 May 2022
- Lot Fourteen Trees
 - An update was added to the portal for Kadaltilla Board Members
- Heritage Places (Adelaide Park Lands) Amendment Bill 2022
 - On 4 May 2022, the Heritage Places (Adelaide Park Lands) Amendment was introduced in the Legislative Council by Hon Robert Simms MLC.
 - The amendment includes that the Adelaide Park Lands is established as a State Heritage Area
 - A link to the Heritage Places (Adelaide Park Lands) Amendment Bill 2022 is below
[https://www.legislation.sa.gov.au/_/legislation/lz/b/current/heritage_places_\(adelaide_park_lands\)_amendment_bill_2022_hon_robert_simms_mlc/b_as_introduced_in_lc/heritage_lands_amendment_bill_2022.un.pdf](https://www.legislation.sa.gov.au/_/legislation/lz/b/current/heritage_places_(adelaide_park_lands)_amendment_bill_2022_hon_robert_simms_mlc/b_as_introduced_in_lc/heritage_lands_amendment_bill_2022.un.pdf)
- Aquatic Centre
 - Friday 20 May, with Iliia Houridis and other senior staff of Council attended a preliminary meeting with the Premier, Minister Koutantonis and Member for Adelaide Lucy Hood, along with key Departmental staff at the Adelaide Aquatic Centre
 - The purpose was to commence discussions in line with the State Governments commitment to build and operate a new aquatic and wellbeing facility to replace the existing one
 - The focus was on how we can work together with further meetings to come to work through details
 - CoA has provided background information so far (ie feasibility studies, business case, design layouts, feedback from consultations)
 - Kadaltilla will be informed on the next steps, noting consultation within the first 100 days of the new term of Government was a commitment and is anticipated mid June.

Board Decision

That Kadaltilla / Park Lands Authority notes the Presiding Member Verbal report.

Representations

4.1 Adelaide Park Lands Management Strategy Review – Consultation

Speakers

Mayor Anne Monceaux
City of Burnside

*Representation attached

Speaker Points:

- Climate change advocates
- Kaurna history, colonial heritage and recent history
- Managing the environment
- Burnside demographics
- Green Adelaide Breakfast 13 May 2022
- Current Master Planning in Burnside and the changes and challenges
- Several Park Land impacts and associated considerations for the review
- Encouraged and welcomed continued dialogue with the City of Burnside

Discussion Points

- Burnside Park Lands boundary
- World Heritage nomination and listing

Jared Wilson, Landscape Architect

**Representation attached

City of Unley

Speaker Points:

- City of Unley is on the southern side of the City of Adelaide with key areas abutting
- City of Unley Community Profile
- Reliance on public courts in the absence of public netball courts in Unley
- Sport and Recreation
- City of Unley demographic
- Movement, Walking and Cycling – City of Unley trialling e-scooters
- Walking and Cycling investment and initiatives
- Vehicle movements - Connections / Barriers
- Shared pathways
- Inconsistent treatments for parking and split between business and residential use vs actual park lands users and a conversation to be had about the role of that space & parking opportunity
- Big Moves within the Strategy linking to the suburbs & great connections discussion is important and supported along with the idea of an urban address
- The enticement and invitation to become part of the Park Lands and linking through to the surrounding suburbs requires an understanding of the look and feel of the Park Lands frontage and how it will evolve over time
- Major Events – Royal Show reliance on Park Lands
- Role and consideration of Cultural development sites to share knowledge between council areas
- Stormwater control, wetlands & flood mitigation
- Combatting heat island effects, expansion of tree canopy & preservation of larger trees
- Desire to discuss further irrigated grass in the south Park Lands and potential cooling effect on northerly winds into Unley and benefits of the presence of larger water bodies for microclimate
- Economic Development in Unley – Greenhill Road as a boulevard, presence of corporate hubs and work/life balance opportunities
- Development P&D Code for Greenhill Road/Fullarton Road
- City of Unley Priorities:
 - Continued access to open space for community.
 - Sport and recreation venues.
 - High quality walking and cycling connections.
 - Increased tree canopy.
 - Stormwater control and management.
 - Appropriate Greenhill Road development.
 - Verge improvements Greenhill Road.
 - Ongoing opportunity to partner with ACC on projects.
 - Relationship of information sharing, formal & informal, Sport & Rec, CLMP, RAP.

Discussion Points

- Accessing Park Lands and crossing Greenhill Road
- Greenhill Road bikeway
- Anticipated higher density and incorporating underground parking for new residential/commercial buildings considerations

Mayor David O'Loughlin City of Prospect

Speaker Points:

- Additional opportunities to participate
- Appreciative of support for the work along the Prospect Road Corridor
- City of Prospect Community Profile
- Northern Park Lands remain an important recreational and green

- asset for the City of Prospect community
- City of Prospect residential urban footprint, minimal open space and community connection to the northern park lands
- Excited for Aquatic Centre revitalisation
- Strategy still sound, encourage evolution not revolution, the principles at the high level are really good and would like to contribute to fine tuning as the Strategy has a lot of merit
- Improved connections from the north – Main North Road and Jeffcott Street
- Improved connections across the northern Park Lands
- Improved connections across the ring route into the Park Lands from Prospect
- Opportunity to improve connectivity and draw people through the Park Lands – safe paths, safe connections, safe lighting, better landscaping and better cycle links through the entire northern network
- Access to and access time for playing surfaces
- Cultural changes and access to more organised sport space
- Expand and rethink playground near Aquatic Centre (nature play considerations and recreation for young ages)
- Absence of 'loop' paths around / through northern park land areas and encourage further consideration
- Park 3 – consider bush foods approach with paths that are not asphalt or concrete
- Park 4 - potential for increased playing surfaces or jogging loops
- Consider mountain bike track further to the east
- Opportunities in and for the north:
 - Large scale regeneration (forest experience)
 - Low level regeneration
 - Better connectivity for cycling and walking
 - Better experiences within the Park through loop paths or east/west paths
 - Extra passive recreation to enjoy what is there
 - Active recreation and associated increased vitality from organised sport
 - Hosting major events
 - Partnership and goal for a feeling of shared space
- Partnership opportunity and advocacy support with a joint plan owned by all 7 perimeter councils and a joint advocacy strategy that says the upgrades are for everyone not just the Authority asking or the City of Adelaide financing but an entire metro area contributing

Discussion Points

- Strategy review process and review timeframes to be shared

During the address from Jared Wilson, Rob Brookman AM entered the Colonel Light Room at 6.28 pm

Ben Willsmore having disclosed a perceived conflict of interest in the City of Unley representation in Item 4.1 - Adelaide Park Lands Management Strategy Review – Consultation, remained in the Colonel Light Room to listen to the City of Unley representation but did not contribute to the deliberation on the item.

Items for Board Decision

5.1 Item 5.1 - Mini Golf in Possum Park / Pirltawardli (Park 1) - North Adelaide Golf Course Update

Discussion Points:

- Design options and reuse of existing buildings/space
- Shade shelter
- Hard space between the regatta and weir
- Connectivity, types of use and accessibility
- Surface design options
- Design catering for life expectancy of mini-golf, depreciation and asset replacement and / or return to Park Lands considerations
- Return to Park Lands and operating review points
- Design brief and asset utilisation

- Weir replacement, integration and access considerations

Board Decision to Advise City of Adelaide

That Kadaltilla / Park Lands Authority:

1. Notes the Community Land Management Plan (CLMP) for Possum Park / Pirtawardli (Park 1) is supportive of golfing activity.
2. Notes that engagement will be undertaken with Kaurna community in conjunction with any further design and project considerations.
3. Supports progressing a Mini Golf footprint proposal within Park 1 noting further designs will be presented back to Kadaltilla / Park Lands Authority for consideration.
4. Does not support the inclusion of an additional building, and recommends further consideration given to increased functionality of the existing Kiosk / Restaurant.
5. Recommends further design work should include the review and rationalisation of the existing car park area, opportunities to reduced hard paved areas, and improvements to support greater pedestrian and cyclist access from the CBD.

CoA Council meeting to note Kadaltilla advice 14 June 2022.

Items for Board Discussion

6.1 Associate Director Update

Cool Roof Trial on Park Lands Buildings

- Council is working with University of Adelaide.
- Installed product on a couple of building in Josie Agius Park / Wikaparntu Wirra (Park 22).
- Have 3 months of data collection as a baseline and will look at how that improves the cooling effect using that product

Opening of the Wetlands

- Council has received some feedback from the community regarding dogs and use of dogs in that area.
- Signage has been installed requesting dogs are kept on pathways and a number of staff are monitoring the area, assisting people with the changes particularly as the vegetation tries to establish in that location

Telecommunications Tower

- A new tower is proposed in Park 21W, it is not something that Council has approval for it is done under Telecommunications Act.

APLMS Key Achievements Site Tour

- A Key Achievements Site Summary document will be uploaded to the portal

Items for Noting Nil

Other Business Nil

Meeting Close

Board meeting closed at 7.17 pm

Next Board meeting

5.30 pm Thursday, 30 June 2022

Colonel Light Room, Adelaide Town Hall

Lord Mayor, Sandy Verschoor
Presiding Member
Adelaide Park Lands Authority

* Representation Adelaide Park Lands Management Strategy Review – City of Burnside
** Representation Adelaide Park Lands Management Strategy Review – City of Unley

City of Adelaide Staff

In Attendance

Iliia Houridis – Director City Shaping
Tom McCready – Director City Services
Sarah Gilmour - Associate Director Park Lands, Policy & Sustainability
Shaun Coulls – AD Strategic Property & Commercial
Alison Ackland - Adelaide Park Lands Authority Advisor
Judy Speck - Council Governance Advisor

City of Burnside

Presentation to the

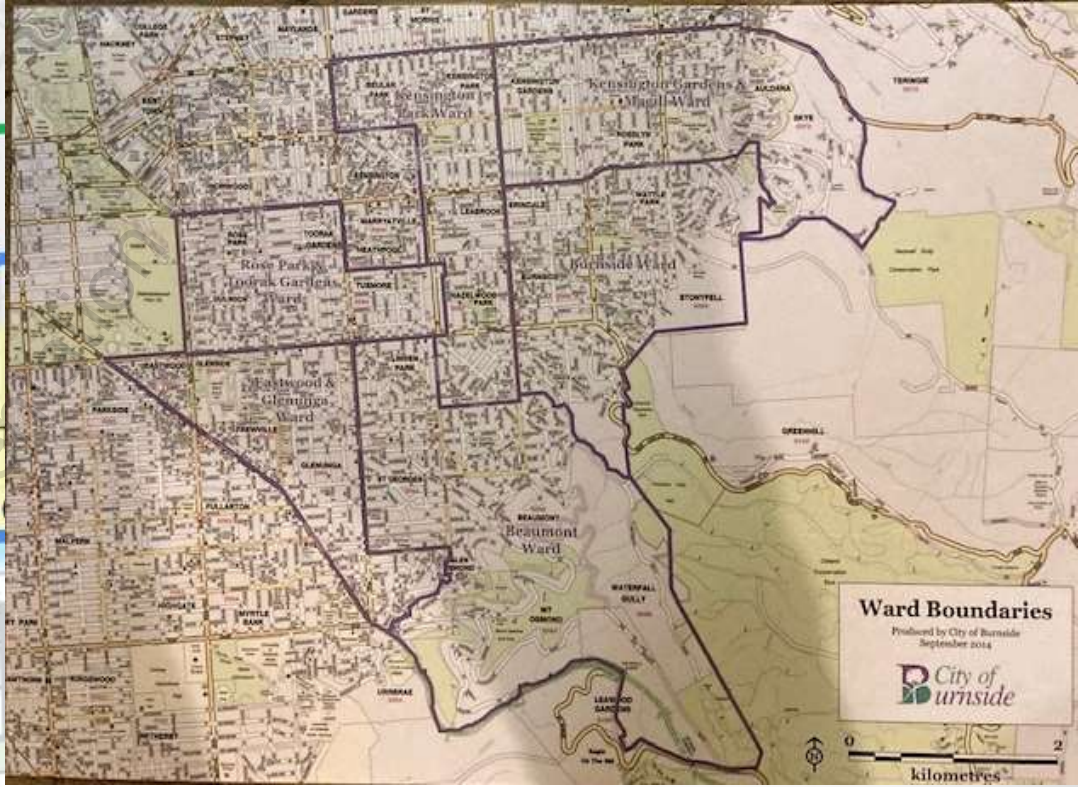
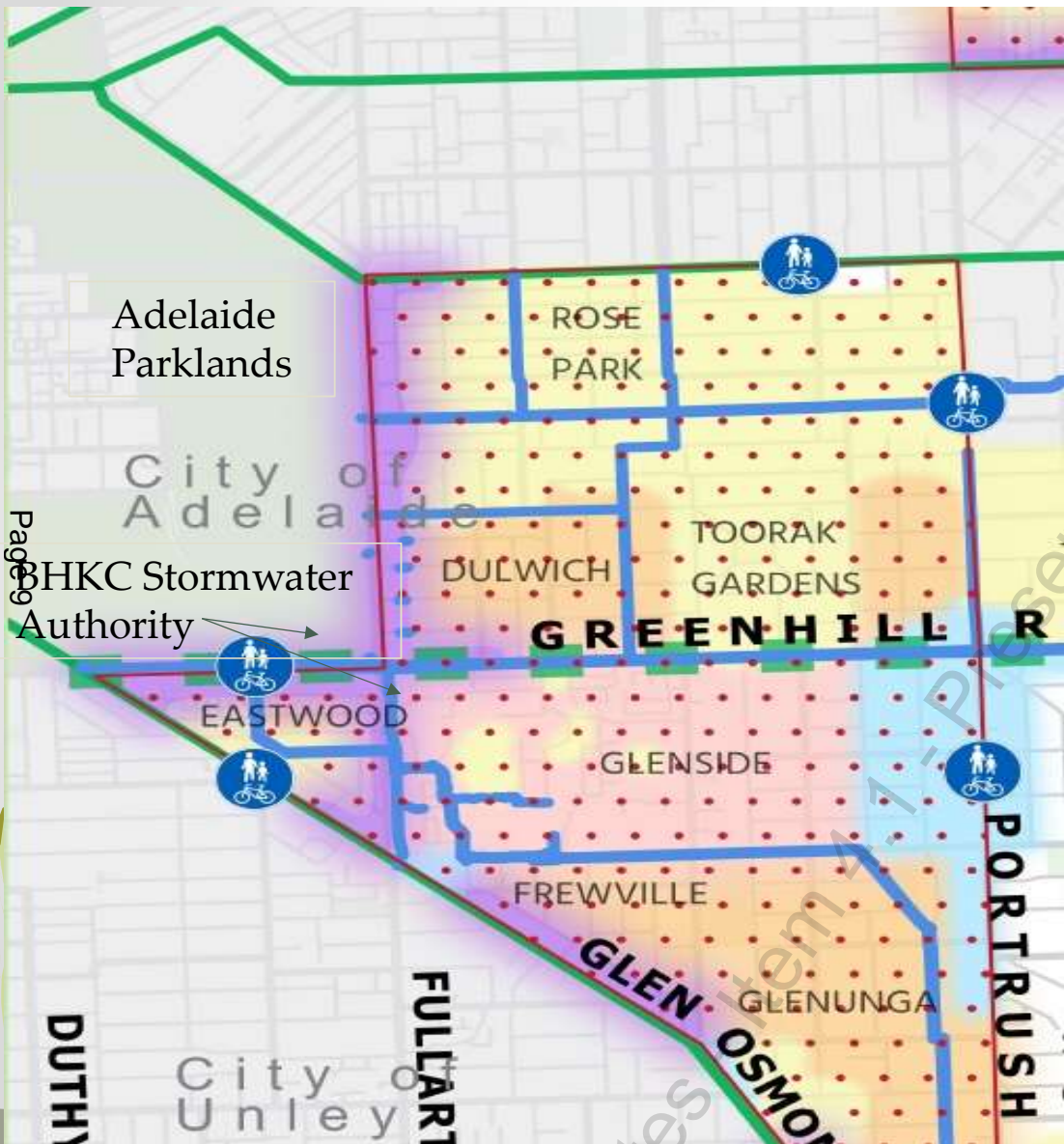
Kadaltilla Parklands Authority



Mayor Anne Monceaux
May 26th 2022



f Burnside



Page 9

Minutes Item 7 - Proposed

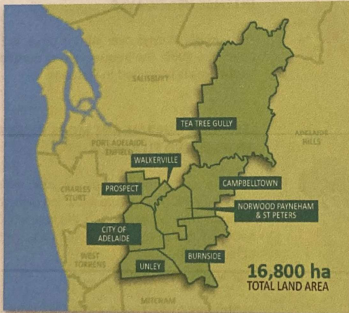


RESILIENT EAST

Resilient East is about making sure Adelaide's eastern region remains a vibrant, desirable and productive place to live, work and visit, and that our businesses, communities and environments can respond positively to the challenges and opportunities presented by a changing climate.

RESILIENT EAST

Climate Ready Eastern Adelaide



WHO WE ARE

We are a regional climate initiative between state and local governments in eastern Adelaide. Our partnership is between Campbelltown City Council, the Cities of Adelaide, Burnside, Norwood Payneham and St Peters, Prospect, Tea Tree Gully, Unley, the Town of Walkerville and the Government of South Australia.

OUR GOAL

Our goal is to improve the resilience of communities, assets and infrastructure, local economies and natural environments so we can cope with the challenges and opportunities of climate change.

WORKING TOGETHER

There is strength in numbers. By collaborating, our region can deliver a coordinated response to climate change, and, by sharing information, resources, responsibilities and actions together we can achieve a Resilient East.

JOIN US

We regularly work with people and organisations from all levels of government, NGOs, community groups, individuals and the private sector.

We are getting climate ready and we'd love you to join us!

resilienteast.com



WE ARE CLIMATE CHANGE ADVOCATES

The City of Burnside declared a **Climate Emergency** in October 2019

An important goal in our Strategic Plan is to be **Carbon Neutral by 2030**

We continue to measure environmental sustainability targets that are supported by our community.



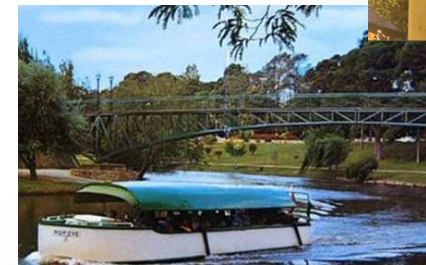
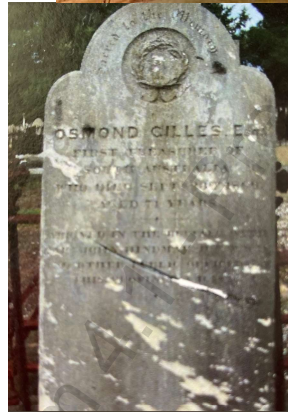
We Value and Respect

Kaurna History

Colonial Heritage

Recent History

Page 11



Minutes - Item

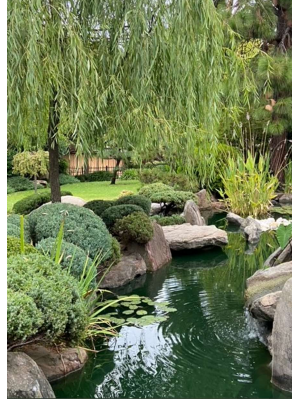
Minutes - City of Burnside

We Support Protecting and Managing the Environment

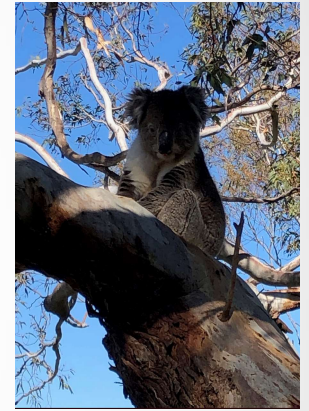
Connection



Education



Understanding



Demographics

Burnside is increasing in population: currently 45,869 (43,911 in 2016).

Average age is 44

58% under 50 and 41% over 50 years

21% aged under 18 (20% of those between 0 and 14)

24% retirees and seniors aged 60-84 years of age

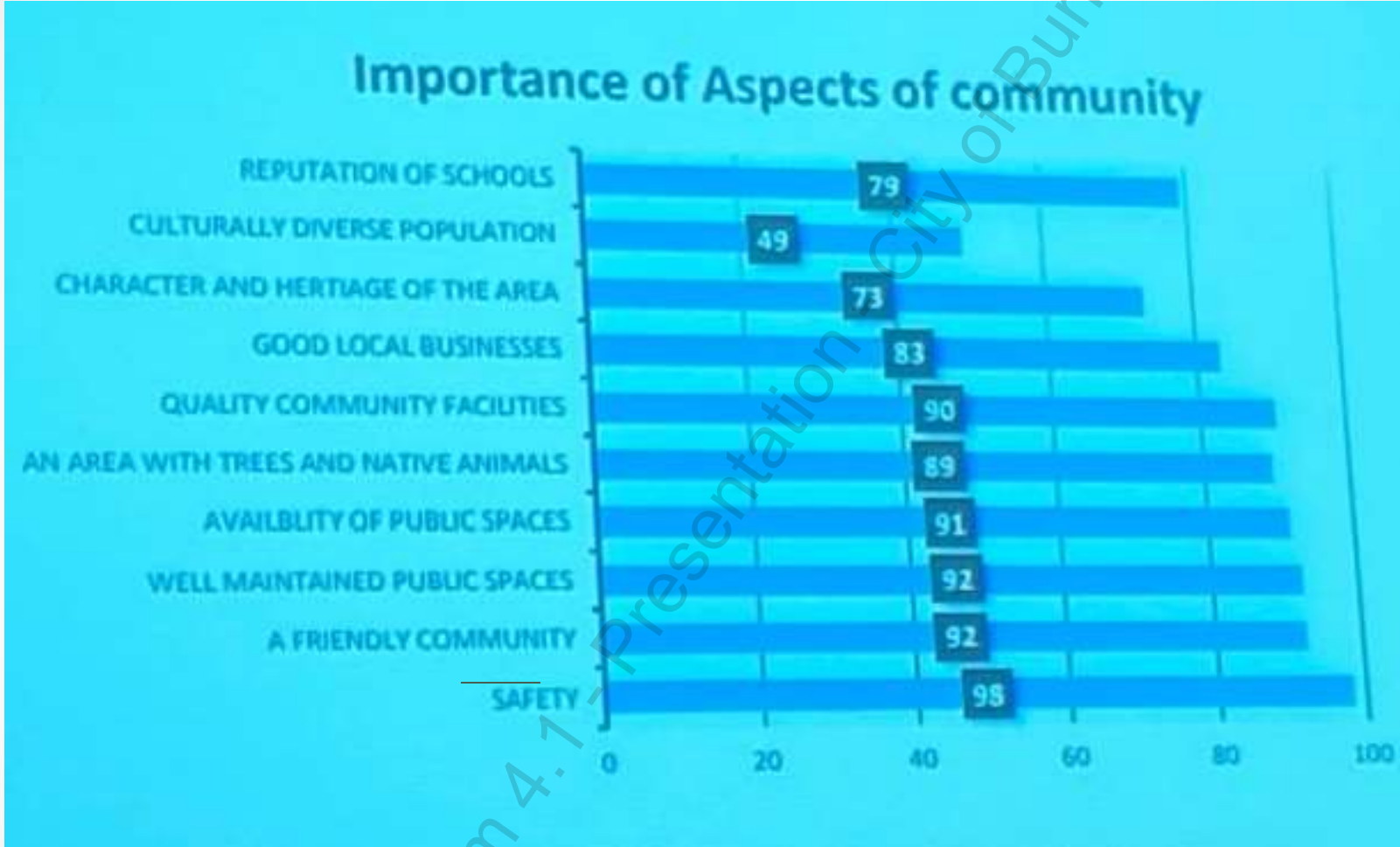


One third born overseas and increasingly new citizens come from most parts of Asia, as well as across the world.

Mandarin Chinese mostly spoken after English.

42% of adults have **tertiary** qualifications.



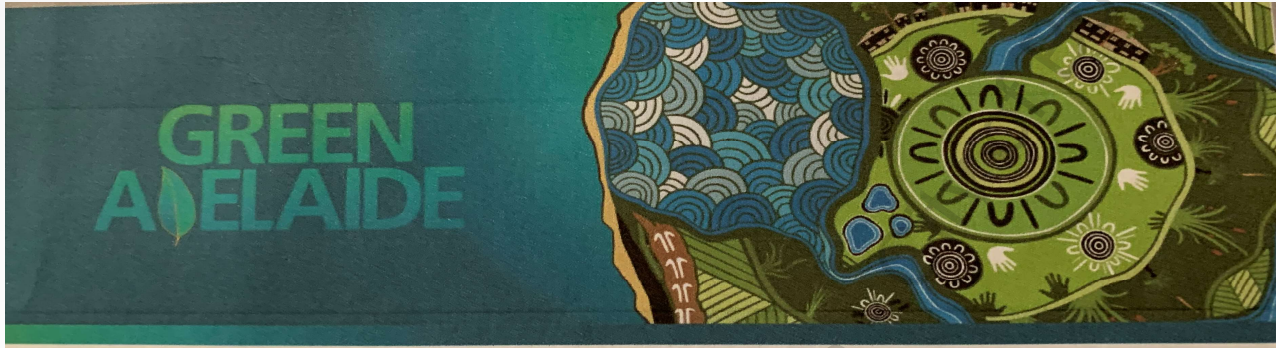


From City of Burnside's 2021 Annual Community Survey

Comments from Councils at the Green Adelaide Breakfast Meeting on May 13th 2022

- Education about trees (socio-economic/educational relationship)
- Planning rules undervalue trees
- Public apathy (unless motivated by local issue)
- Community values green spaces
- Building industry and developers do not
- Infill is contrary to greening
- Need to imagine our future and plan for the future you want

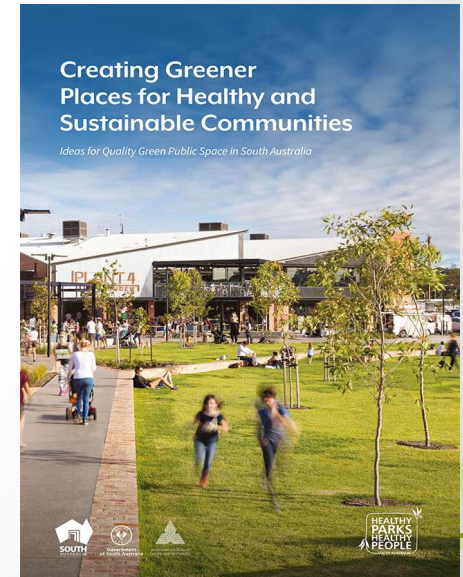
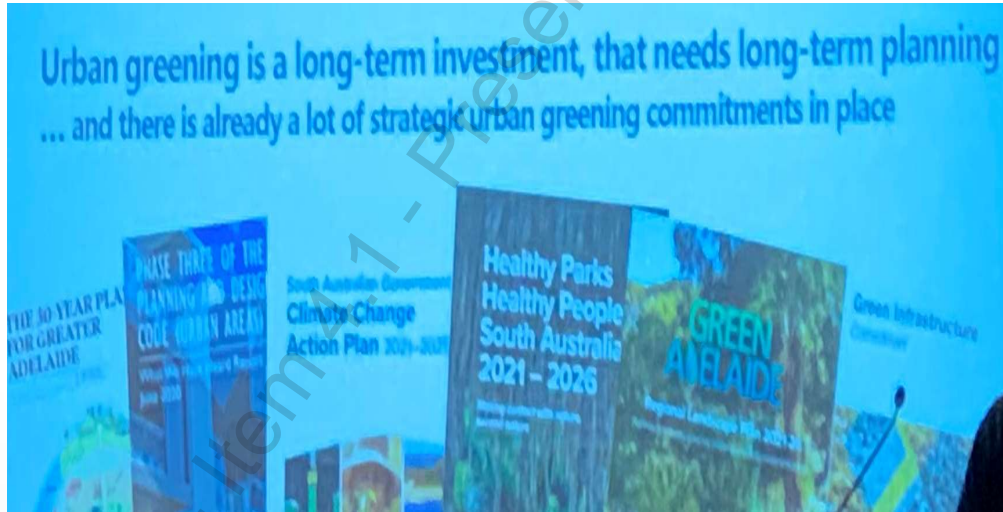




Need to have a vision and plan for the long term



URBAN DESIGN FOR WELLBEING + MENTAL HEALTH CASE STUDY OF ADELAIDE

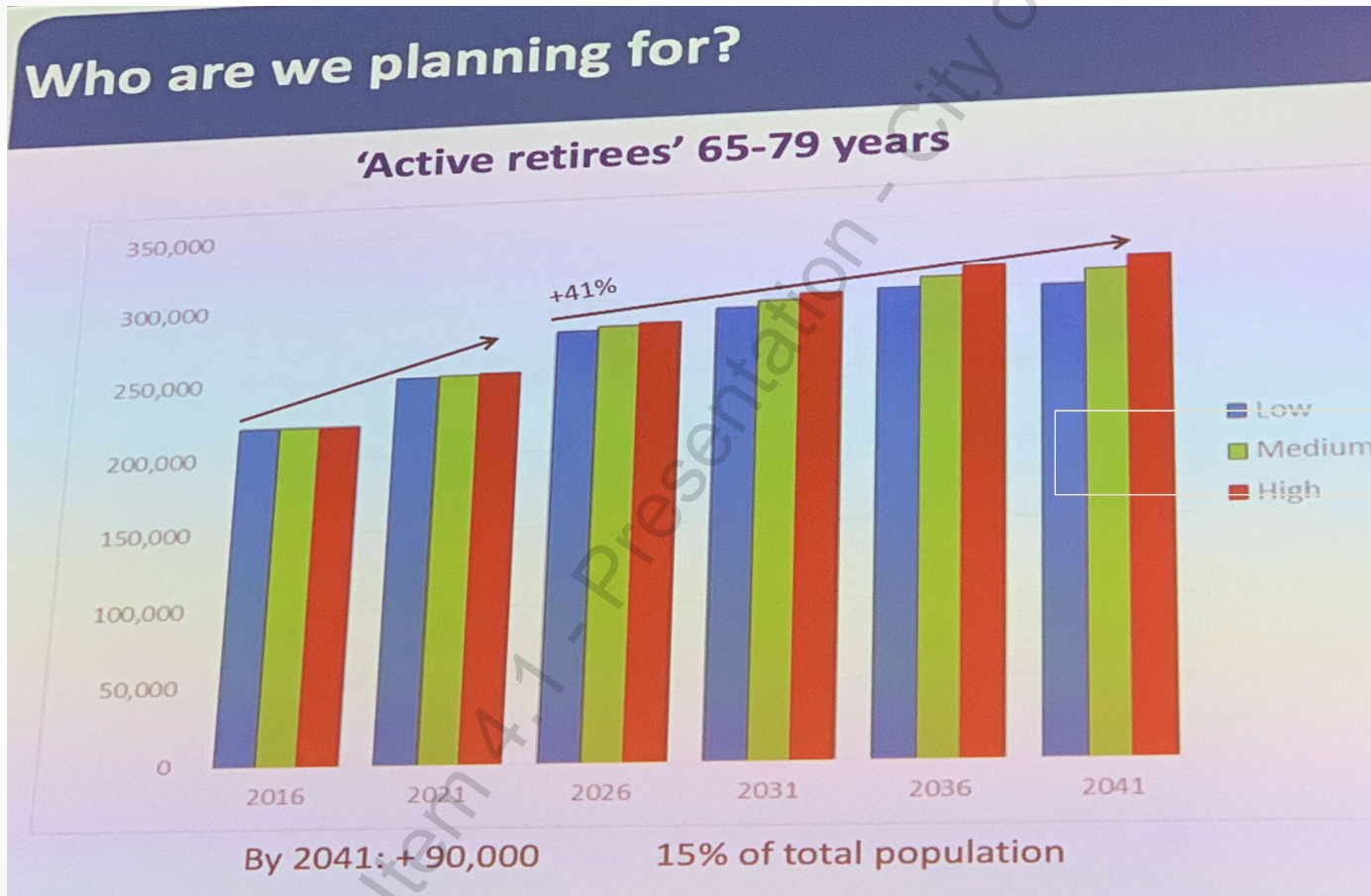


Creating Greener Places for Healthy and Sustainable Communities

Ideas for Quality Green Public Space in South Australia



Below: SA Planning Institute slide from Australian Conference in 2019



Minutes - Item 4.7 - Presentation - City of Burnside



‘Connecting People to Places’ Current Master Planning in Burnside

A plan for people, movement, traffic and urban form to plan for future growth in our city (see www.engage.burnside.sa.gov.au)

What are we learning from this?

We are planning for our future!

How does this connect to the Parklands?



Changes and Challenges

- Changing population (age and culture)
- Adelaide has the largest rate of lone person households in Australia (27.3%)
- Loneliness and homelessness, campers
- Increased densification of housing resulting from Planning/Urban infill along with increased need to downsize, but still be near family, friends, local shops and transport
- Larger houses and smaller back or front yards; apartments and units with no yards
- Impact of cars...access to homes, traffic, speed, danger and parking
- More dogs, bikes and scooters in our communities
- Tree canopy loss as a result of State laws and increase in urban infill
- Climate change implications and environmental sustainability
- Increasing demands from population growth and changed usage (development vs open space)
- Implications for maintenance or improvement of the 'quality of life' by residents
- Increased demand for sportsfields, especially for women and girls
- Reluctance to change, particularly any loss of open space.



Minutes - Item 11 - Presentation - City of Burnside

PARKLAND IMPACT 1

Changing population (age and culture)

Increased densification of housing resulting from

Planning/Urban infill; more 2 for ones with little garden space

Larger houses and smaller back or front yards; apartments & units with no yards.



Considerations for APLA:

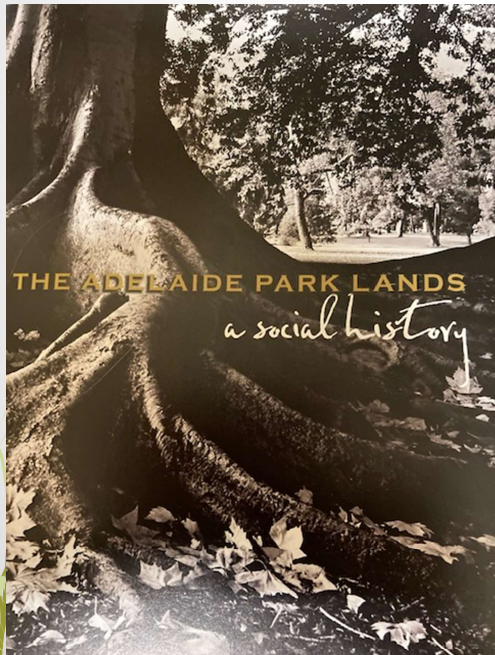
- Demand for more open space
- Demand for more playgrounds/places for children, teenagers and people to play, walk, be active
- More need for community gardens
- Signage in different languages
- Opportunities for music, art, cultural activities
- Catering for diverse cultural groups (sports, games)



PARKLAND IMPACT 2

Adelaide has the largest rate of lone person households in Australia (27.3%)

Loneliness, homelessness and campers.



Considerations for APLA:

- Need for affordable community housing (short and long term)
- More places for people of all ages, genders and with disability to gather where they belong (and can access safely)
- Places to commune with nature and with others
- Demand for community gardens (also for apartment dwellers)
- Community and Sporting Clubrooms make a difference
- Importance of local libraries as community centres
- Churches do still fill a role for community belonging

PARKLAND IMPACT 3

Increasing demand from population growth and changed usage (development vs open space)

Increased demand for sports fields, especially for women & girls

Reluctance to change, particularly any loss of open space.



Considerations for APLA:

- Providing more play space for women and girls sport and physical recreation
- Balancing need for open space with increased demand for fixed facilities, such as change rooms, toilets, sports fields and courts
- Increased demand for usage of open space for walking, relaxing, picnicking, partying
- Increased demand for natural places and spaces (mountain bikes, creeks) as well as for people playing on constructed facilities (wheel/skateparks, ovals, swimming pools).



PARKLAND IMPACT 4

Tree canopy loss as a result of State laws and increase in urban infill

Implications for maintenance or improvement of the 'quality of life' by residents

Climate change implications and environmental sustainability



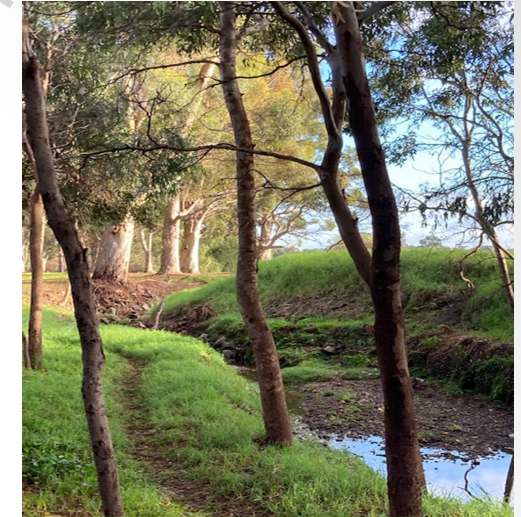
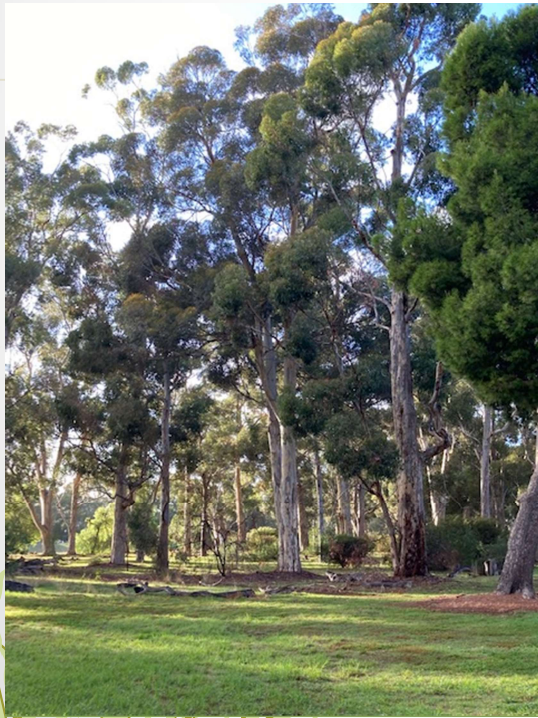
Considerations for APLA:

- Trees are important for our environment and are constantly under threat
- They need more protection but are costly to manage
- Support for tree retention and need for more planting (along with important historic groves).

PARKLAND IMPACT 5

Implications for maintenance or improvement of the 'quality of life' by residents

Climate change implications and environmental sustainability



Considerations for APLA:

- Challenge is to retain 'natural' spaces vs need for development (both for building and environmental protection, eg. BHKC)
- Need to develop more calm, respite places in our parklands to cater for growing mental health needs
- Continue to work with neighbouring councils and local residents regarding changes to the environment.

PARKLAND IMPACT 6

Climate change implications and environmental sustainability

Implications for maintenance or improvement of the 'quality of life' by residents

More dogs, bikes and scooters in our communities.



MID MURRAY COUNCIL

NOTICE TO DOGS

Welcome to this Off-Leash Park

Just a few notes that you need to be aware of whilst using this area

- Dress for the occasion - wear your trendiest collar, ID and current registration disc, it impresses other dogs and the Council.
- Watch your manners and be nice to other dogs or you will have to go home. Don't jump on people or scare kids or little dogs.
- Bring a person 16 years or older with you and maybe another dog. Keep your handler in view at all times and do as your handler asks. Make sure you put your handler on a lead when entering or leaving the park.
- Don't forget to bring a doggy-do bag and tell your handler to pick up after you - there is nothing worse than stuff stuck in your paws.
- If you dig a hole - you fill it in.

But most of all, HAVE FUN. Council maintains this park for you and your handler to enjoy and share with others. Play nicely!



PS - Better make sure your handler knows that if you both don't behave they may just have to pay a fine!

BY ORDER OF THE MID MURRAY COUNCIL

Page 25

Considerations for APLA:

- Need for relevant and informative signage to educate people (different languages?)
- Continuing demand for outdoor exercise stations
- Need for walking and bike or wheel paths that allow access into the city through the parklands (allow space)
- More paths with ramps rather than stairs for bikes, prams, pushers, walking frames and wheelchairs
- More dog controls (not all residents pick up after them or have control and some people fear for their safety).

PARKLAND IMPACT 7

Implications for maintenance or improvement of the 'quality of life' by residents

Impact of cars...access to homes, traffic, speed, danger and parking

Considerations for APLA:

- Increased traffic numbers (rat running) and on main roads
- Parking adjacent Victoria Park and grandstand
- Concerns regarding increased all day parking in neighbourhoods adjacent to the parklands
- Residents' inability to access their driveways or have visitors attend their homes
- Noise from big events (music and general traffic noise)
- Speeding through Dulwich and Rose Park (may become a 40 kph speed limit area).





← Avoid this!

Any questions?

Keep talking to us!



Jared Wilson

Landscape Architect

City Design

Kaurna Country



Minutes - Item 4.1 - Presentation - City of Unley

BIG MOVES

PLACES & SPACES



BMX and Youth Activity Hub

Precinct/Park

South-east Kurangga (Park 20)

Description

Create a contemporary Park Lands plaza in the north-west corner of the park. The plaza will serve as both a gateway and transition between the City and the Park Lands and provide a setting for temporary gallery pavilions and art installations serviced by a small café with associated outdoor dining. Expand the existing BMX track to include a skills track and mountain bike trails, creating a significant destination with associated attractions including nature and adventure play complemented by a small café or kiosk.

“Build on the cycling theme create a skills park for beginner and intermediate mountain bike riders.”

Shape the Park Lands 2015

IMAGE: Governors Island Park and Public Space, New York
ARCHITECT: West 8



Vibrant Veale

Precinct/Park

South Walyu Yarta (Park 21)

Description

Refresh the formal gardens. Consider upgrading existing infrastructure, developing new infrastructure and/or providing plug and play facilities to support a variety of uses including small to medium events. Expand path network to draw visitors further into the park and improve connections between the suburbs and the City.

“Veale Gardens is a wonderful location with an existing amphitheatre shape that lends itself to live music accompanied by nice food and drinks. With the growing number of residents in the area and increasing visitor numbers to the Park Lands we need a nice place to eat and entertainment venue in the park.”

Shape the Park Lands 2015

IMAGE: Howard Place, Bendigo,
PHOTOGRAPHER: John Gollings



Central Park in the South

Precinct/Park

South-east Pityarilla (Park 19)

Description

Expand on the existing playspace and create an exceptional community park in the southern Park Lands. A new hub will provide a variety of recreation and play opportunities serviced by high quality community facilities and amenities including a kiosk/café and fenced dog park.

“The Marshmallow Park is a great idea but I think it should be extended into a playground where people WANT to come and will make the effort to do so. Make it bigger and better so it's a place that all Adelaidians will want to come to.”

“Dog parks. These are not only fun for the dog, but also connect people together; promoting socialisation for all ages and makes everyone happy.”

Shape the Park Lands 2015

IMAGE: Drapers Field, London
ARCHITECT: Kinear Landscape Architects
PHOTOGRAPHER: Adrian Taylor



Victoria Park – Final stages

Precinct/Park

Victoria Park Pakapakanthi

Description

Complete the vision of the existing master plan including southern wetlands, nature play opportunities and improved amenities to service sport and community use. Maximise opportunities for community recreation in and around the State Heritage precinct, including provision of an all-abilities playspace and community courts.

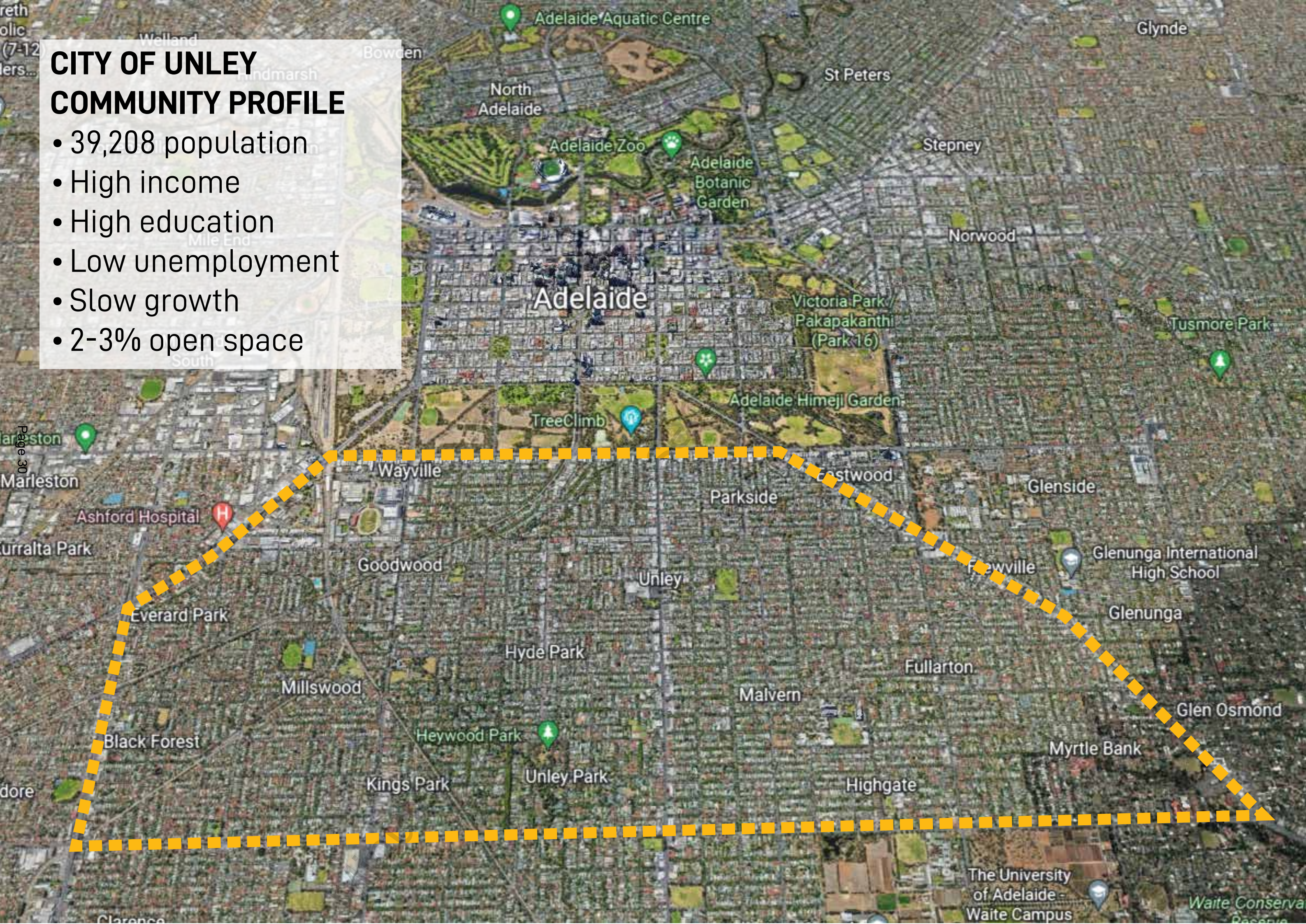
“I want to create a native forest in Victoria Park. I would like to see a significant portion of Park 16 returned to how it would have looked before settlement. A wetlands in the south would provide flood mitigation, but I'm thinking kangaroo grass as high as a man on a horse, gum trees etc..”

Shape the Park Lands 2015

IMAGE: Thalie Park, Chalon-sur-Saône, France
ARCHITECT: Urbicus

CITY OF UNLEY COMMUNITY PROFILE

- 39,208 population
- High income
- High education
- Low unemployment
- Slow growth
- 2-3% open space



SPORT & RECREATION SAUCNA NETBALL

- St Johns Lutheran
- Rosefield Uniting

ADELAIDE LUTHERAN

- Overflow & Training
- Kenilworth Cricket Club
Touch Football



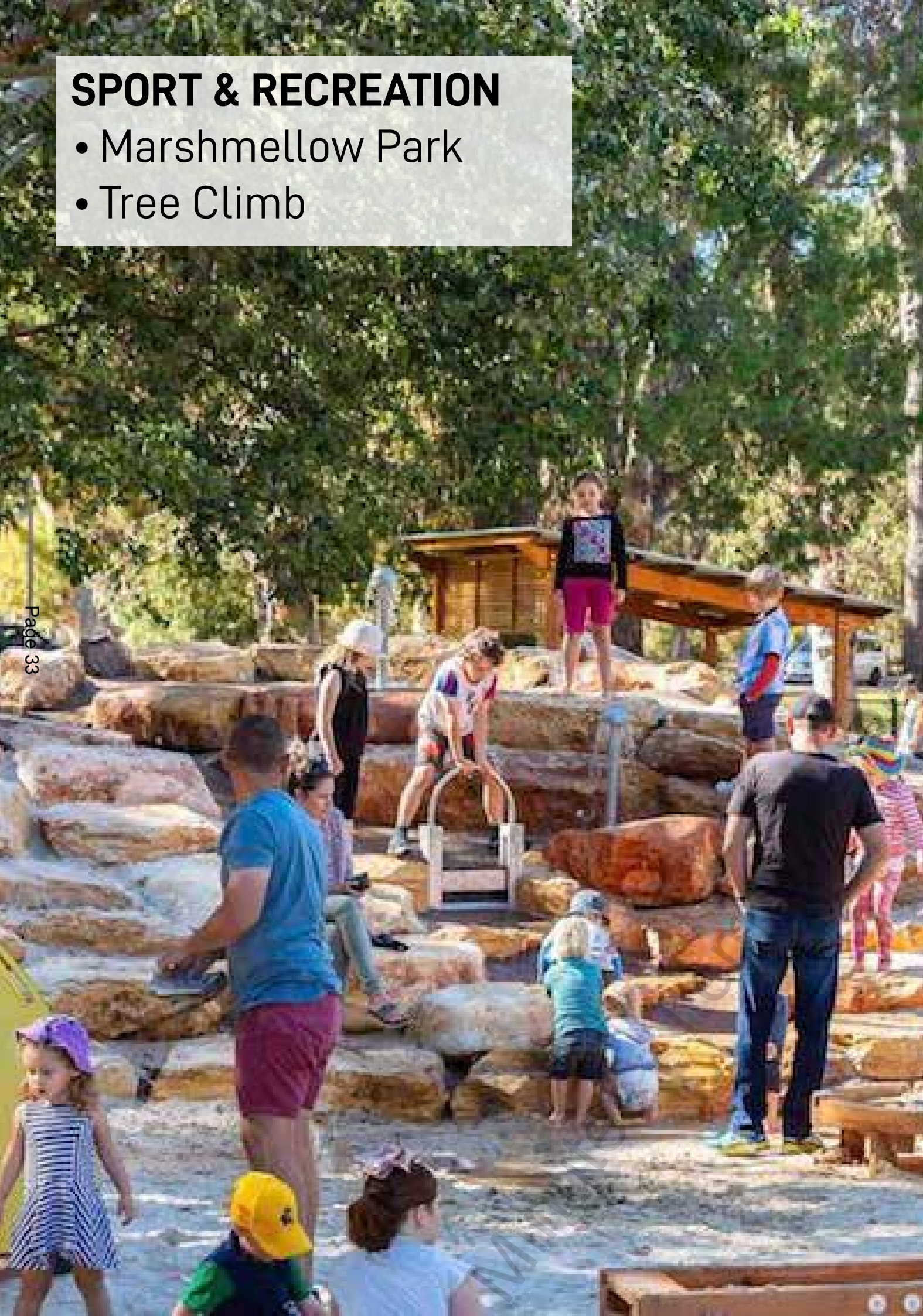
SPORT & RECREATION

- Pityarilla
- City Dirt



SPORT & RECREATION

- Marshmellow Park
- Tree Climb



MOVEMENT

- 78.2% live Unley - work outside Unley
- 6,396 people to ACC
- 60% travel by car

34.7%

1.5%

6.9%

5.0%

6.9%



WALKING & CYCLING

- 1,600+ daily cyclists (2015/21)
- Through Parklands in day
- Edges at night
- E-scooter trials



253

ANZAC HWY/MARINO ROCKS GWAY

661

MIKE TURTUR BIKEWAY

266

UNILEY ROAD

448

RUGBY/PORTER BIKEWAY



WALKING AND CYCLING INVESTMENT

- Kerb buildouts
- Traffic calming
- Give-way Changes
- Sharrows
- Planting
- Linemarking
- Signage



CONNECTION/BARRIER

- 36,000-45,000 vpd N/S
- Greenhill Rd 50,000+
- 6 lanes and 10m median
- Long wait times for peds + cyclists at intersections

Missing:

- Greenhill Road shared path
- Joslin Street shared path



PARKING

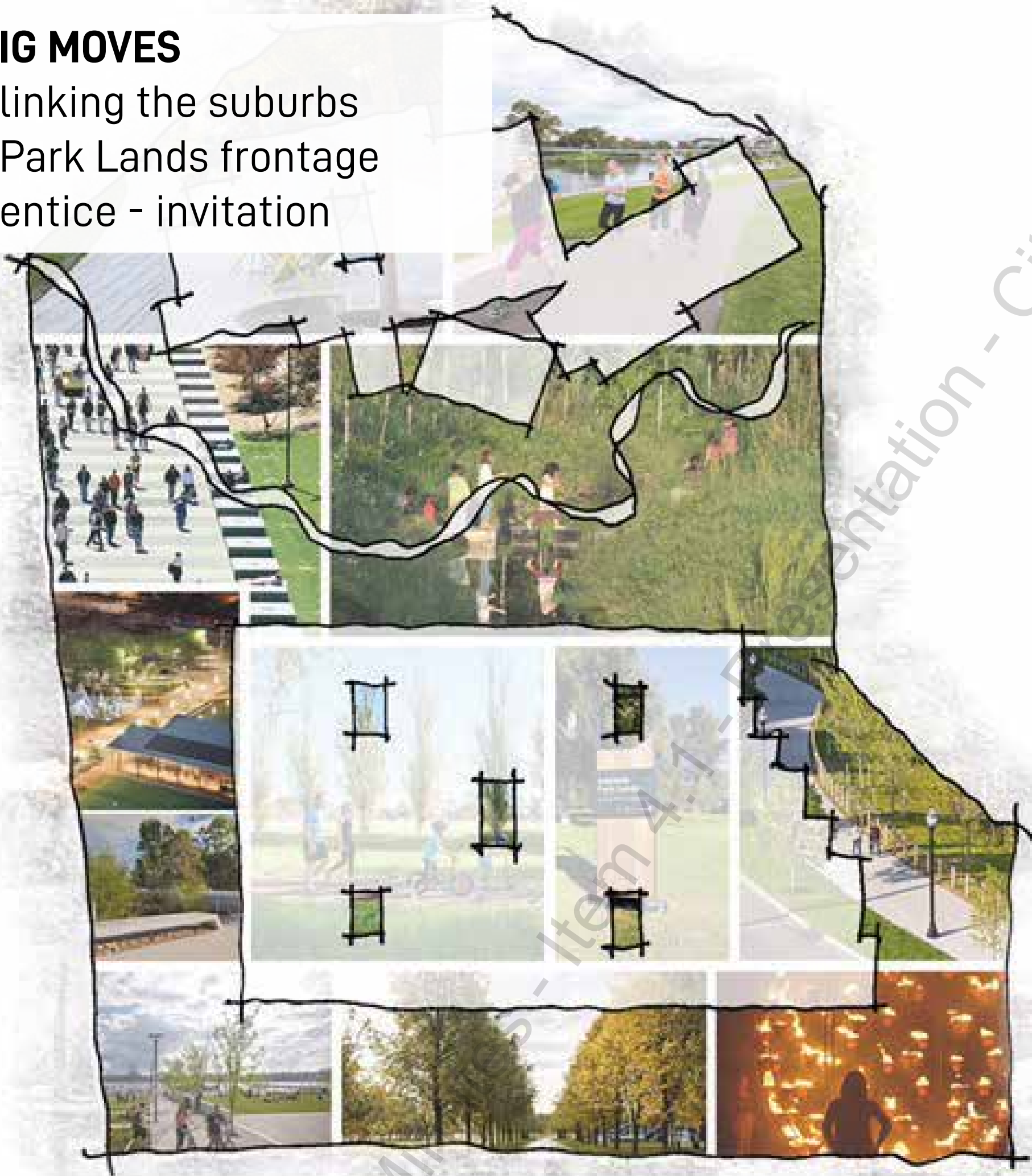
BUS ROUTES/STOPS

- City commuters
- Inconsistent treatments
- Parklands vs business/resident users
- Low patronage/surplus stops
- Advertising income



BIG MOVES

- linking the suburbs
- Park Lands frontage
- entice - invitation



Great connections

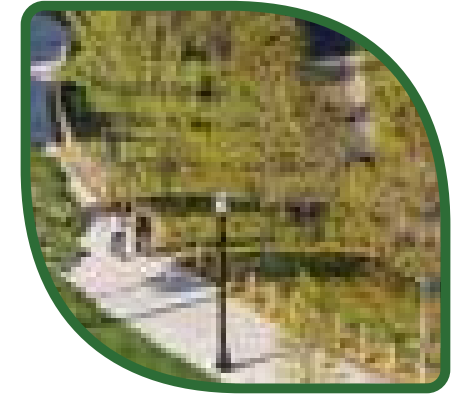
Description

Improve pedestrian and cycling networks linking the suburbs, Park Lands and City with regular and safe crossing points and path lighting.

.....
 "Paths to connect the Park Lands to the suburbs."

Shape the Park Lands 2015

IMAGE: Klyde Warren Park, Dallas, USA
 ARCHITECT: OJB Landscape Architects
 PHOTOGRAPHER: Mei-Chun Jau



The Urban Address

Description

Provide an increased level of amenity and attraction along Park Lands frontages to both the City and inner-rim suburbs. The approved appearance and functionality will encourage and entice further exploration deeper into the parks.

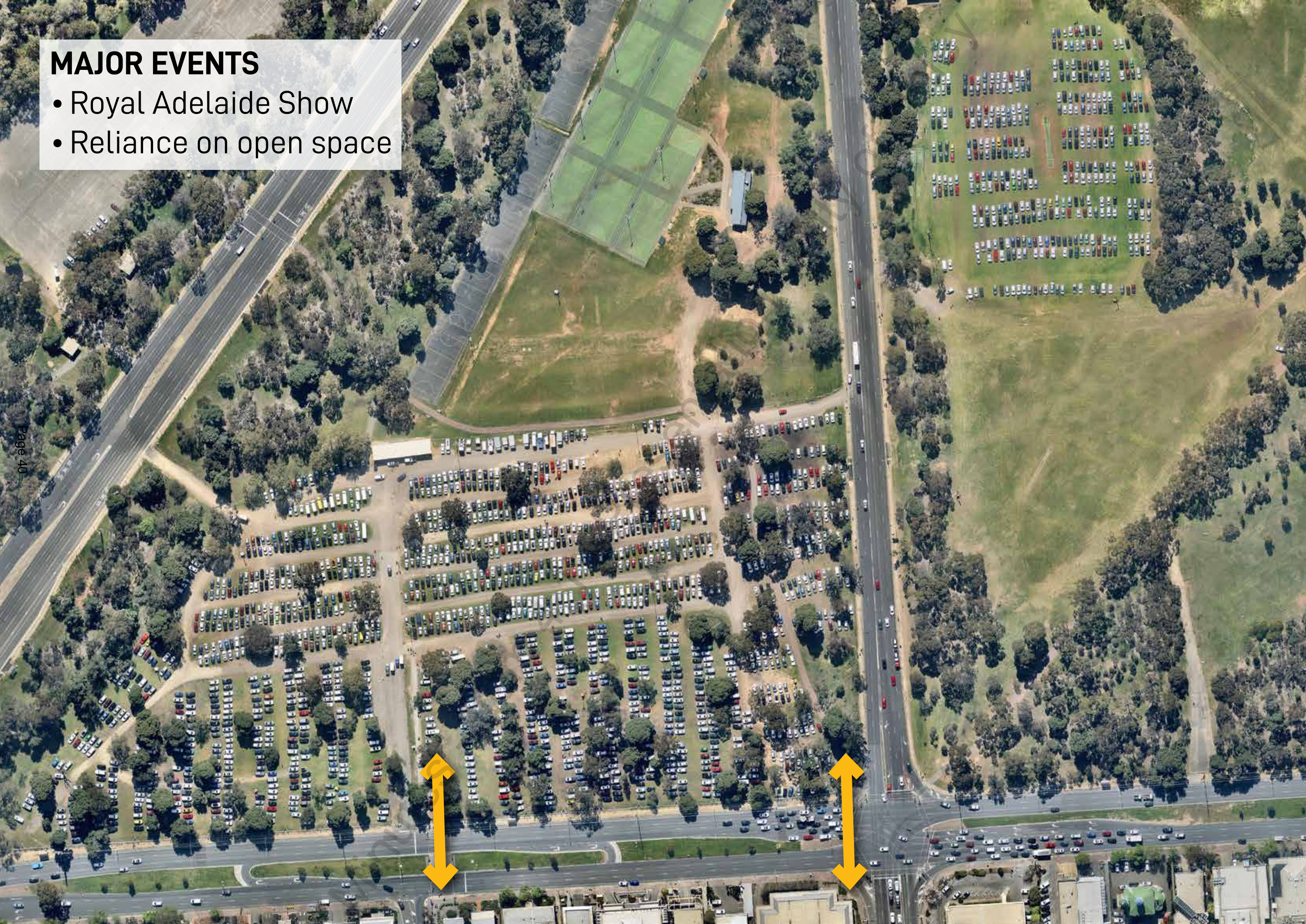
.....
 "As you look at the south park lands from Greenhill Road often you get a sense of foreboding. It doesn't look inviting at all. It would be great if its design could cleverly encourage people to enjoy their working lunch in park benches or to do their fitness there."

Shape the Park Lands 2015

IMAGE: Mill River Park, Connecticut, USA
 COPYRIGHT: OLIN / Sahar Coston-Hardy

MAJOR EVENTS

- Royal Adelaide Show
- Reliance on open space



MAJOR EVENTS

- Cultural Burn
- Connection to Country
- RAP development
- Shared knowledge

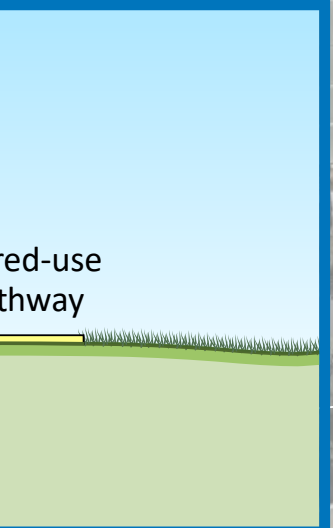


STORMWATER CONTROL

Parklands Creek Convergence

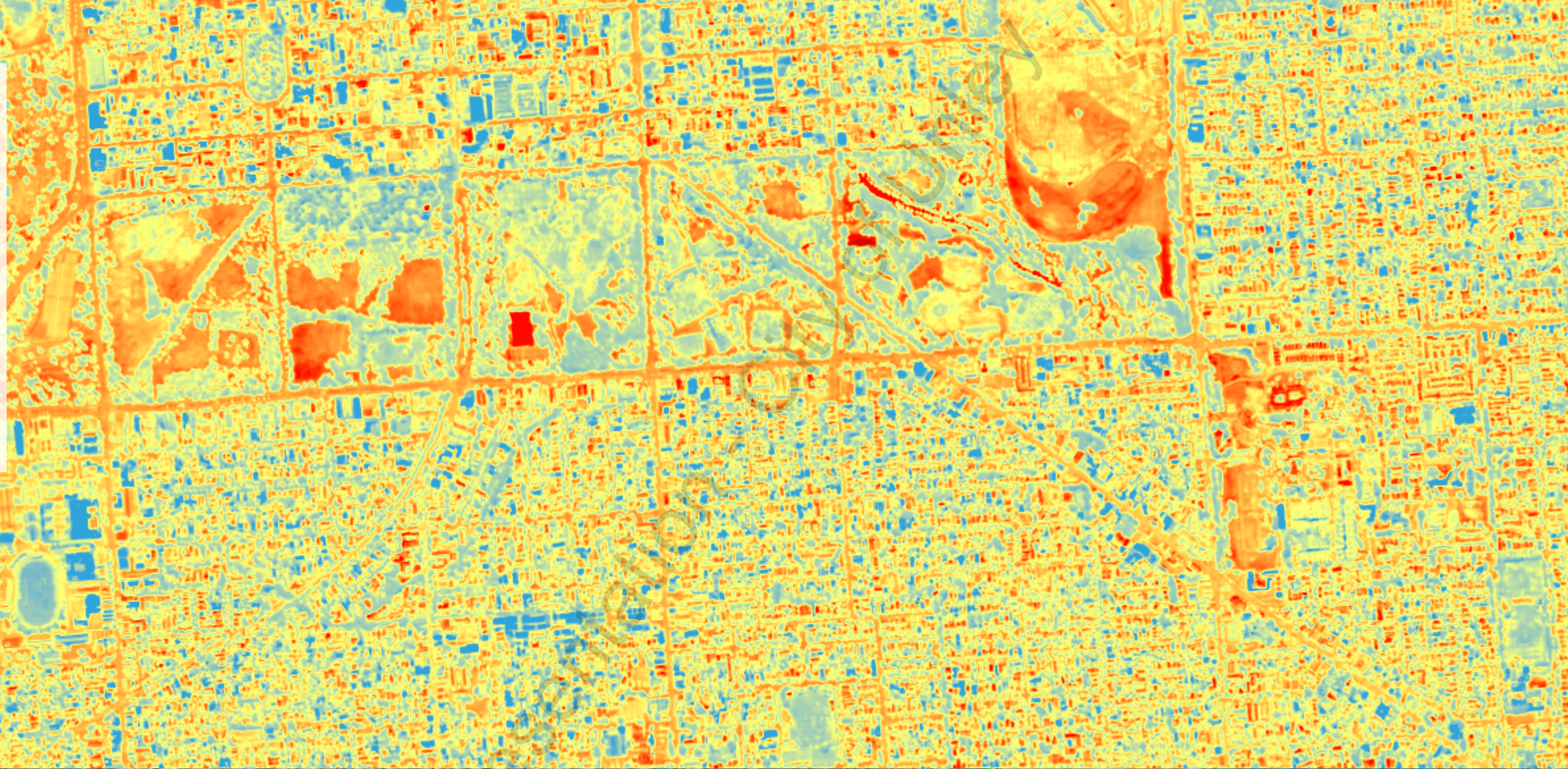


Page 42



HEAT ISLAND + TREE CANOPY

- Irrigated grass
- Trees biodiversity
- Canopy shade
- Temperature relief



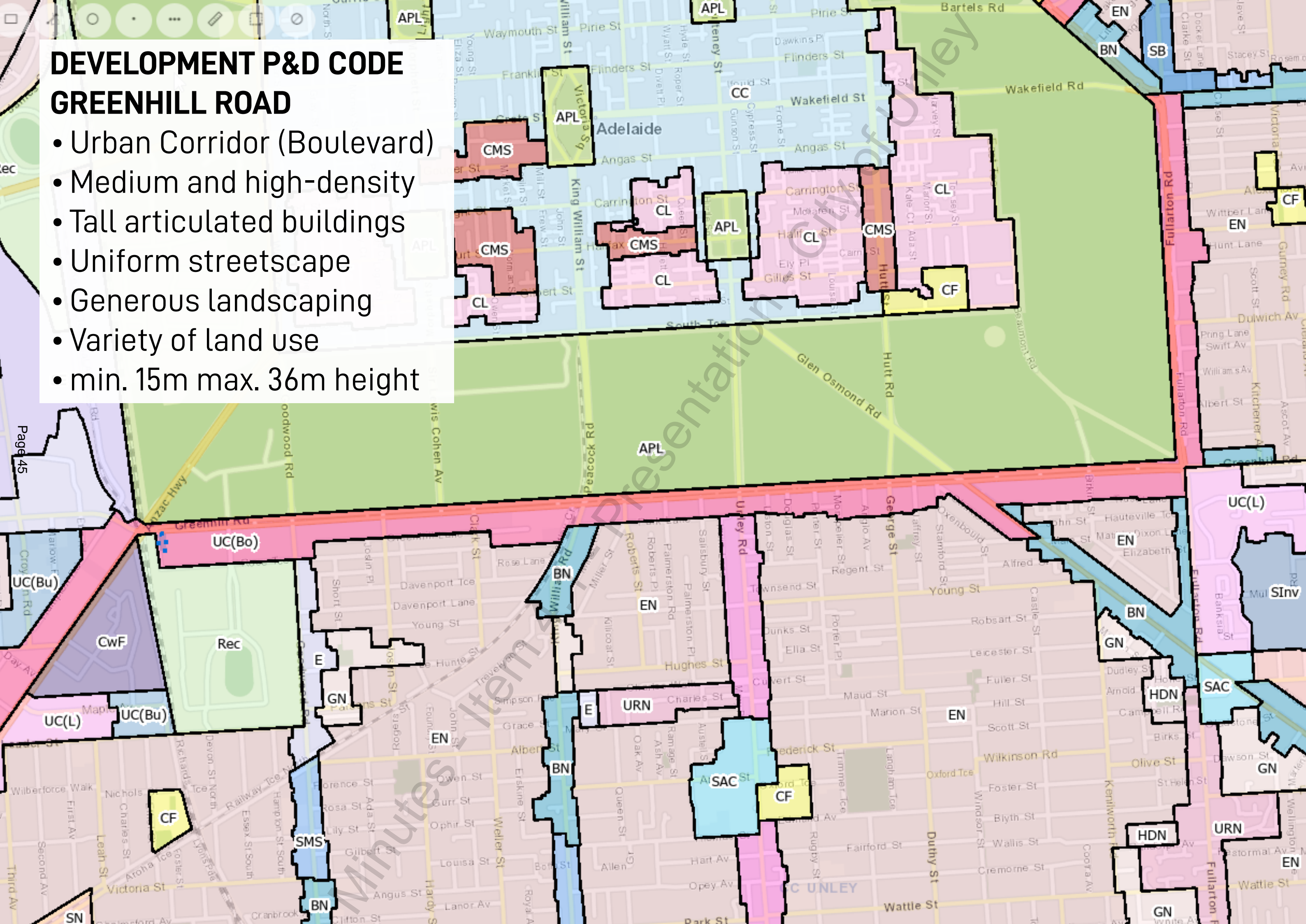
ECONOMIC DEVELOPMENT

- Boulevard precinct
- Corporate hubs
- Work-life balance
- Private investment

BUSINESS WITH EDGE.

DEVELOPMENT P&D CODE GREENHILL ROAD

- Urban Corridor (Boulevard)
- Medium and high-density
- Tall articulated buildings
- Uniform streetscape
- Generous landscaping
- Variety of land use
- min. 15m max. 36m height



DEVELOPMENT P&D CODE GREENHILL ROAD

- Current density outcomes from 6 recent developments is 200 dwellings/Ha
- Over next 25 yrs +1800 dwellings
- +3,000 population
- \$14M to P&D Fund



CITY OF UNLEY PRIORITIES

- Continued access to open space for community.
- Sport and recreation venues.
- High quality walking and cycling connections.
- Increased tree canopy.
- Stormwater control and management.
- Appropriate Greenhill Road development.
- Verge improvements Greenhill Road.
- Ongoing opportunity to partner with ACC on projects.
- Relationship of information sharing, formal & informal, Sport & Rec, CLMP, RAP.